

A COLLABORATIVE APPROACH: ADMISSIONS AND TRANSFER CREDIT POLICY DEVELOPMENT

Eric Breugst, Manager – Academic Advising, Faculty of Arts

Eric Jardin, Admissions Officer, Faculties of Arts & Environment

Samantha Murray, Assistant Registrar, Faculties of Arts & Environment



AGENDA

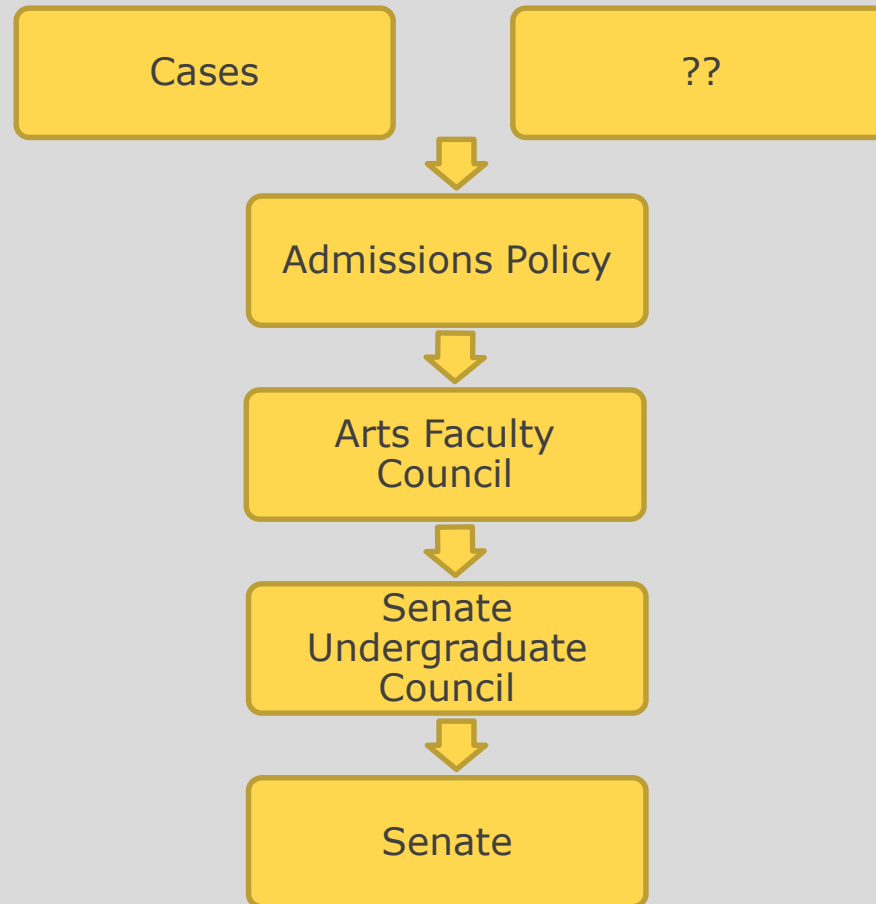
- Introductions
- Historical admissions policy development & approval
- Admissions Guidelines Sub-Committee (AGS)
- Measuring success
- Questions?

HISTORICAL ADMISSIONS POLICY DEVELOPMENT

- Admissions Policy Creation
- Policy vs. Guideline
- Impact beyond admissions
- Considerations/Challenges



ADMISSIONS POLICY APPROVAL PROCESS



ADMISSIONS & TRANSFER CREDIT PROCESS- PRE 2002

- Faculty of Arts Admissions process
 - » Grades
 - » Résumé of activity
 - » Admission Information Form
- Transfer credit assessment
 - » Arts Undergraduate Office
 - » Department
 - » Program Advisors
 - » University College Registrars
- Special 'Cases' committee



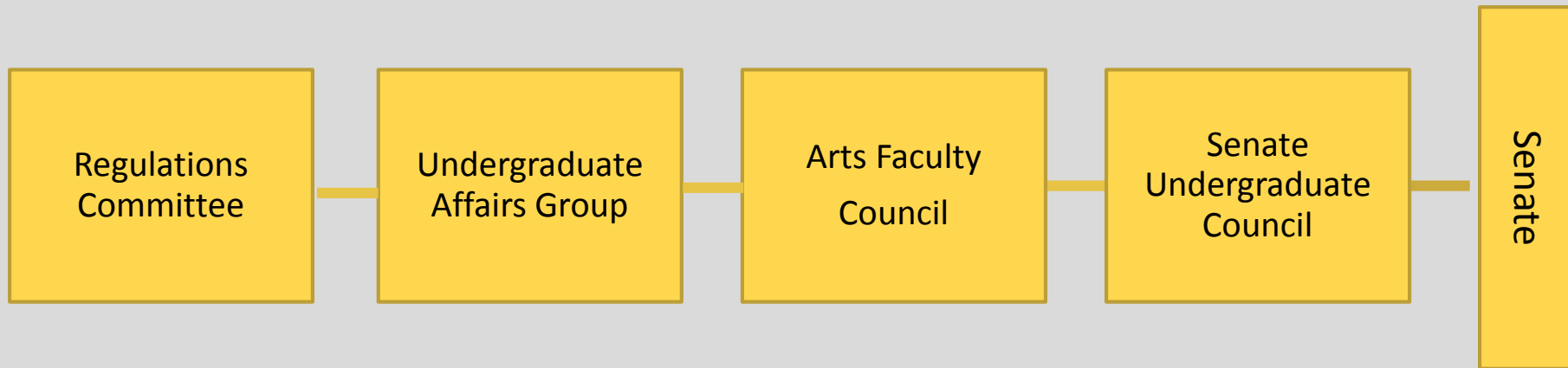
AUDIENCE POLL #1

How does your institution manage the assessment of applicants who do not meet established admissions criteria, but who you have every reason to believe could be successful in his/her studies?



REGULATIONS COMMITTEE

- Sub-Committee to Undergraduate Affairs Group.



- Faculty of Arts Department representatives responsible for determining:
 - » Curricular changes
 - » Student regulations

IDENTIFYING ADMISSIONS CHALLENGES

- Applied degrees
- Transfer credit caps
- Recognition of courses 10+ years
- Transfer credits for non-degree students



AUDIENCE POLL #2

What admissions challenges does your institution face with regard to transfer student admissions?



CREATION OF ADMISSIONS GUIDELINES SUBCOMMITTEE (AGS):

Mission:

- To create a collaborative authority responsible for the review and creation of admissions policy and documentation of existing guidelines
- AGS
 - » *A standing subcommittee of the Arts Admissions Committee whose mandate is to consider practices and regulations governing the admission of students in the Faculty of Arts, including but not limited to Full-time, Part-time, Non-Degree, and Post-degree applications.*



AGS - TERMS OF REFERENCE

Membership:

- » Assistant Registrar – Faculty of Arts
- » At least 2 Admission Officers – Faculty of Arts
- » At least 2 senior members of the Arts Undergraduate Advisor team
- » At least 2 Arts faculty members
- » Registrar – St Jerome’s University
- » Registrar – Renison University College



AUDIENCE POLL #3

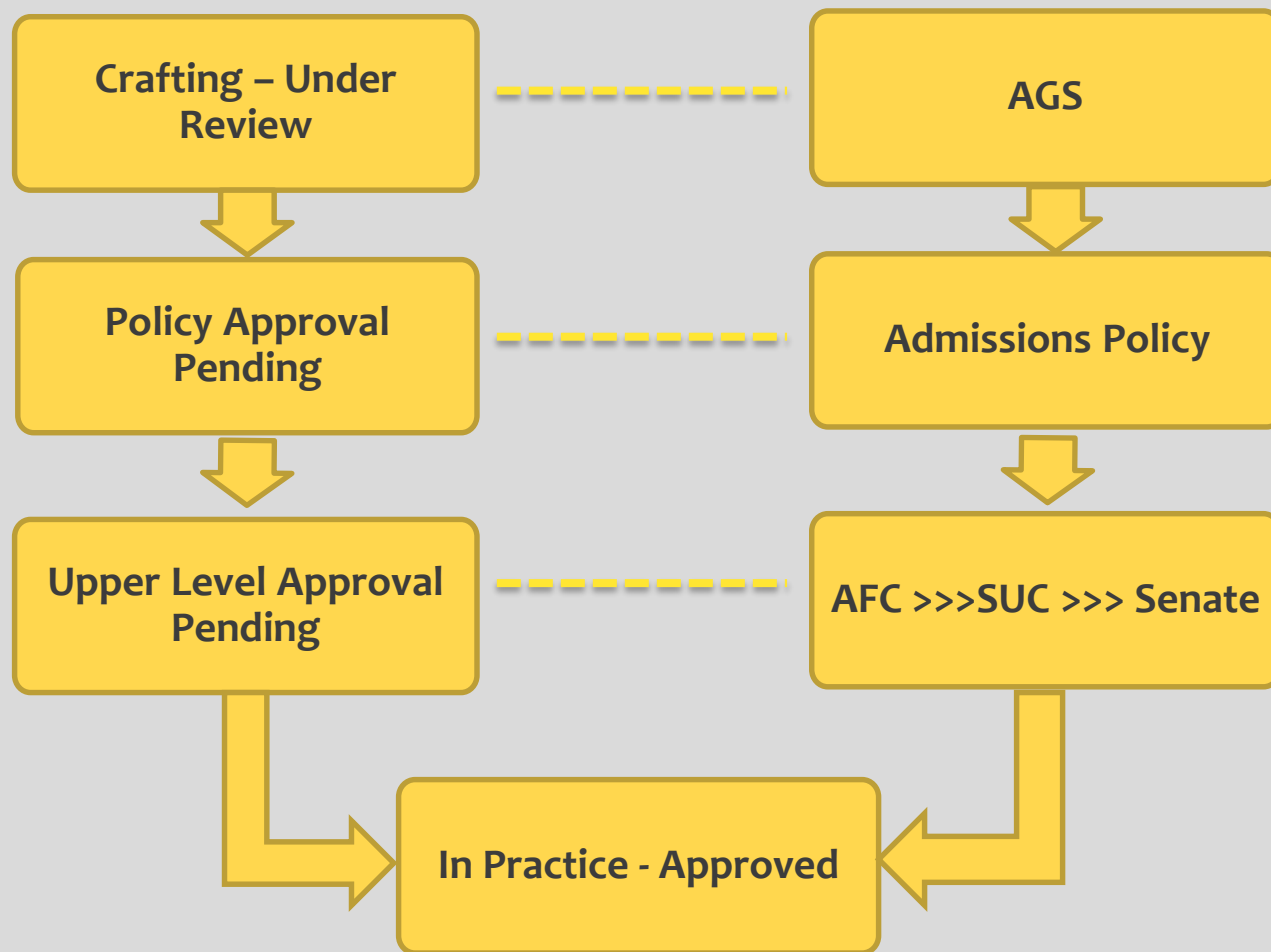
Does a collaborative admissions policy committee, similar to AGS, exist at your institution?

We invite you to consider:

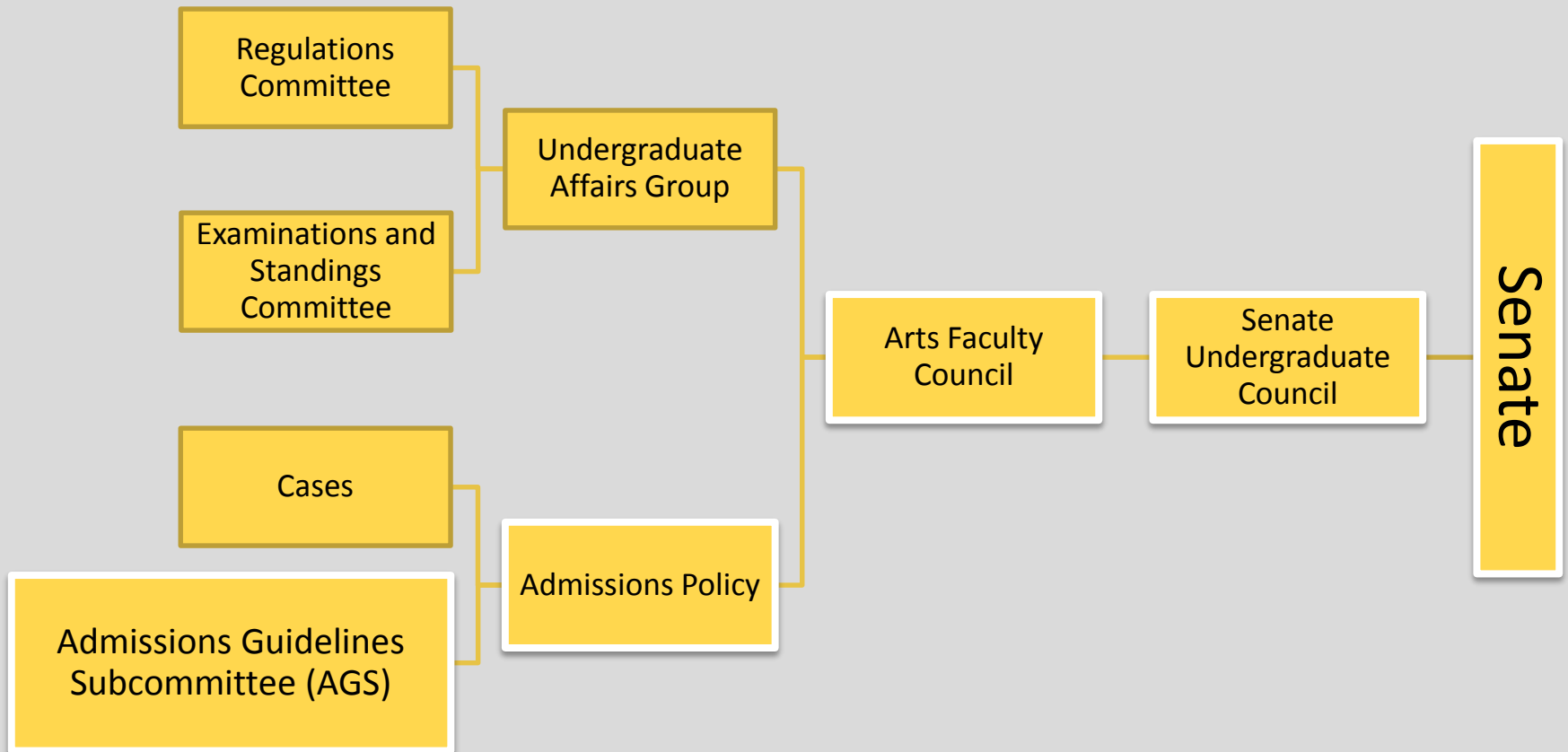
- » *Similarities?*
- » *Differences?*



AGS – POLICY DEVELOPMENT TIMELINES



ADMISSIONS POLICY APPROVAL PROCESS



AUDIENCE POLL #4

How does your institution manage policy development timelines?

We invite you to consider any existing:

- » *Restrictions (time, resources)*
- » *Committee positions (dedicated staff)*



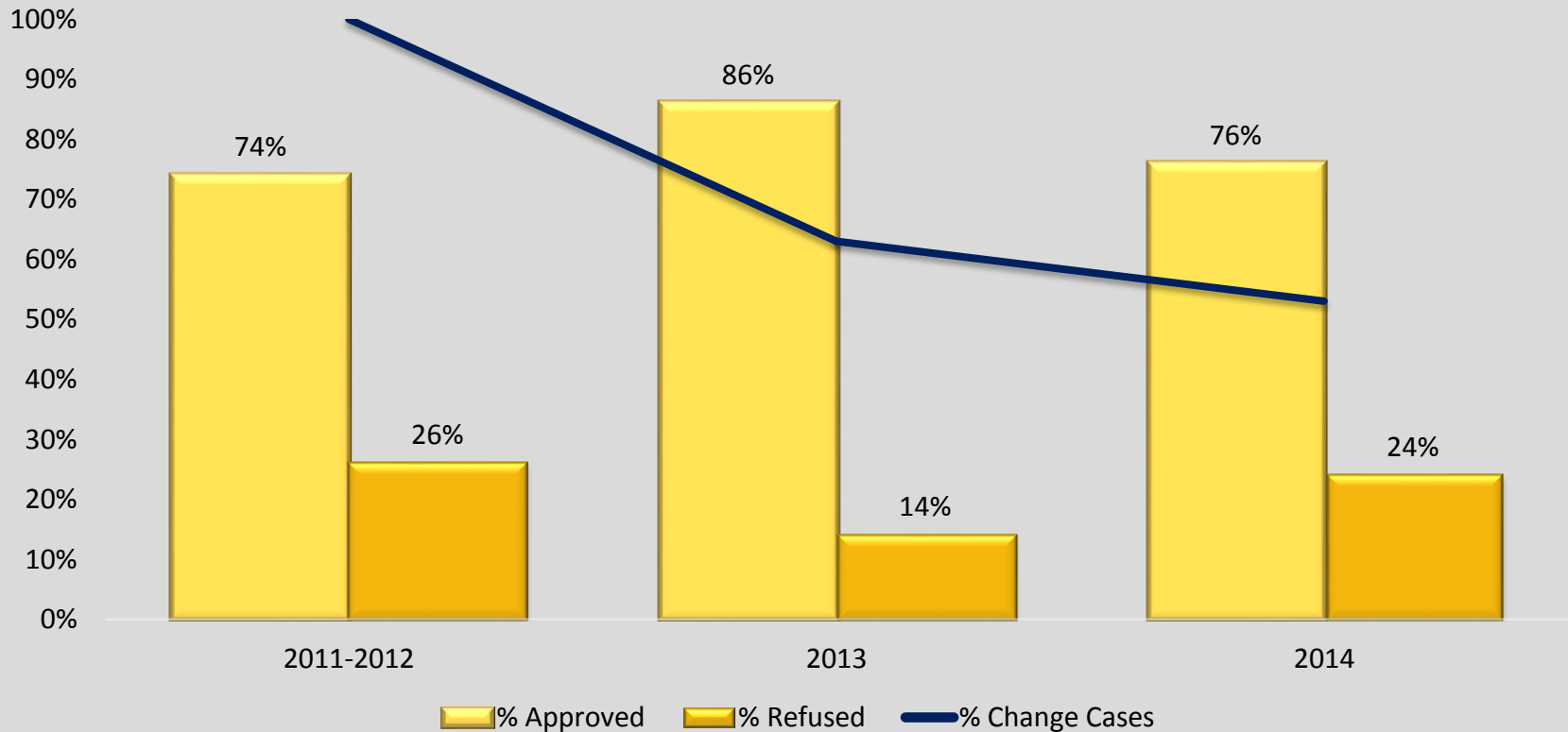
ACHIEVEMENTS

- *Pending approval:*
 - » Re-defining the transfer credit cap for Applied Degree applicants
 - » Re-defining the entering average for Applied Degree applicants
- *Approved:*
 - » Granting admission for college students with 1 year of studies at 80%
 - » Granting Transfer Credits for 1 successful completion of 1 year college studies
 - » Granting transfer credit for courses taken 10 + years ago
 - » Assessing transfer credits at point of admission to Waterloo for non-degree students



AGS – MEASURING SUCCESS

‘Cases’



AGS - MEASURING SUCCESS

Tracking student success over time

» Performance at UWaterloo

Most Recent Recorded Academic Standing	%
Excellent	25%
Good	42%
Satisfactory	18%
Conditional	11%
Failed	4%

85%

AGS – IMPACT ON ADMISSIONS

- Streamlined process for admission policy
- Regular review of current policies
- Admissions decisions consistently applied



Questions?

