



ONCAT

Student Pathways Conference

Interprovincial Panel

April 2015

Ontario Council on Articulation and Transfer

oncat.ca

Panel Agenda

- Today's focus is on collaboration between the CAT's
- Topics include
 - Research
 - Web environments
 - Interprovincial Forum

Panel Agenda

- Moving from west to east
- Panelists
 - Rob Fleming – Executive Director & Co-chair, BCCAT
 - Robin Fisher – Chair, ACAT
 - Glenn Craney, Executive Director, ONCAT

BCCAT and Related Research in BC: Opportunities for Collaboration

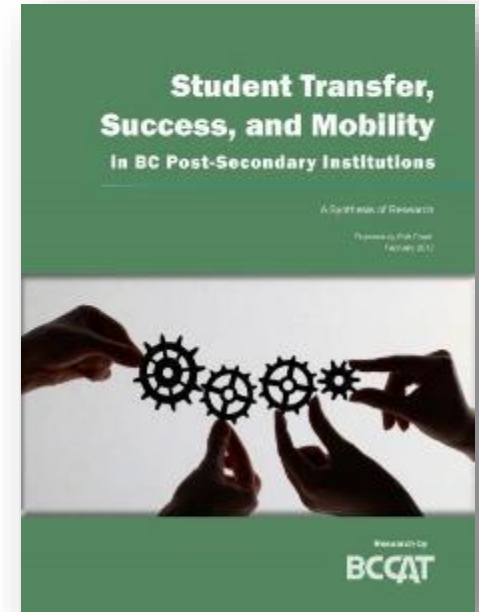
OnCAT Conference
April 20, 2015

Dr. Rob Fleming
Co-chair and Executive Director

BC Transfer System Research

- ▶ Admissions and Transfer Policy and Practice
- ▶ Transfer Satisfaction and Success
- ▶ Student Transitions Project (STP)
- ▶ Student Performance Reports

<http://www.bccat.bc.ca/publications/>

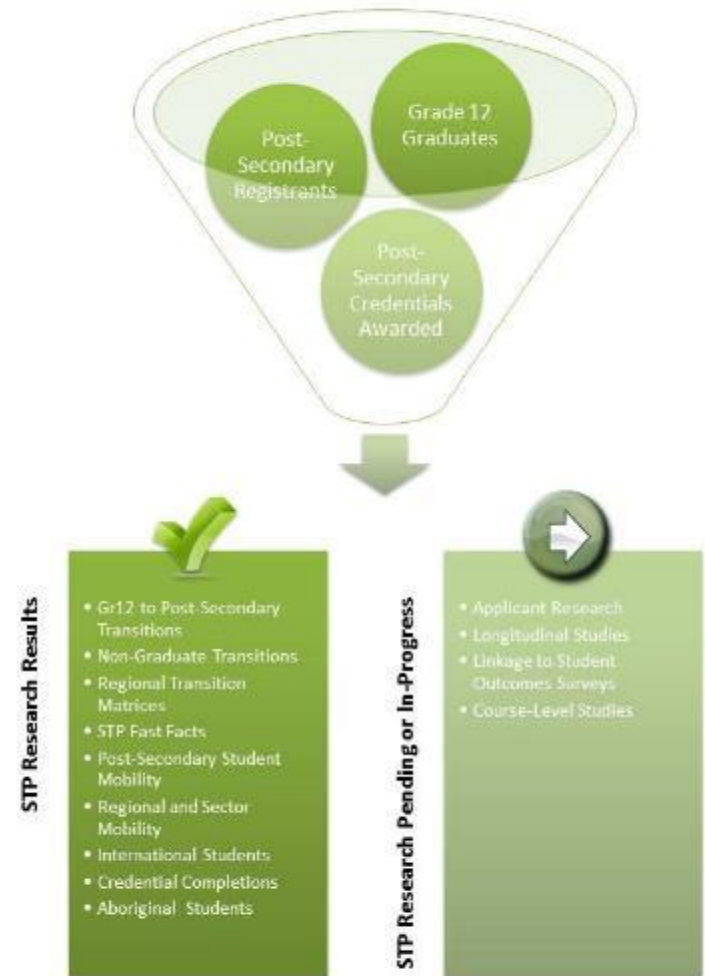


It seems unlikely . . . that another entity would have the credibility that BCCAT has enjoyed with the institutions. . . . It seems safe to conclude that . . . the issues . . . would not have been addressed had the Council not existed.”

Waterhouse, An Assessment of BCCAT Research

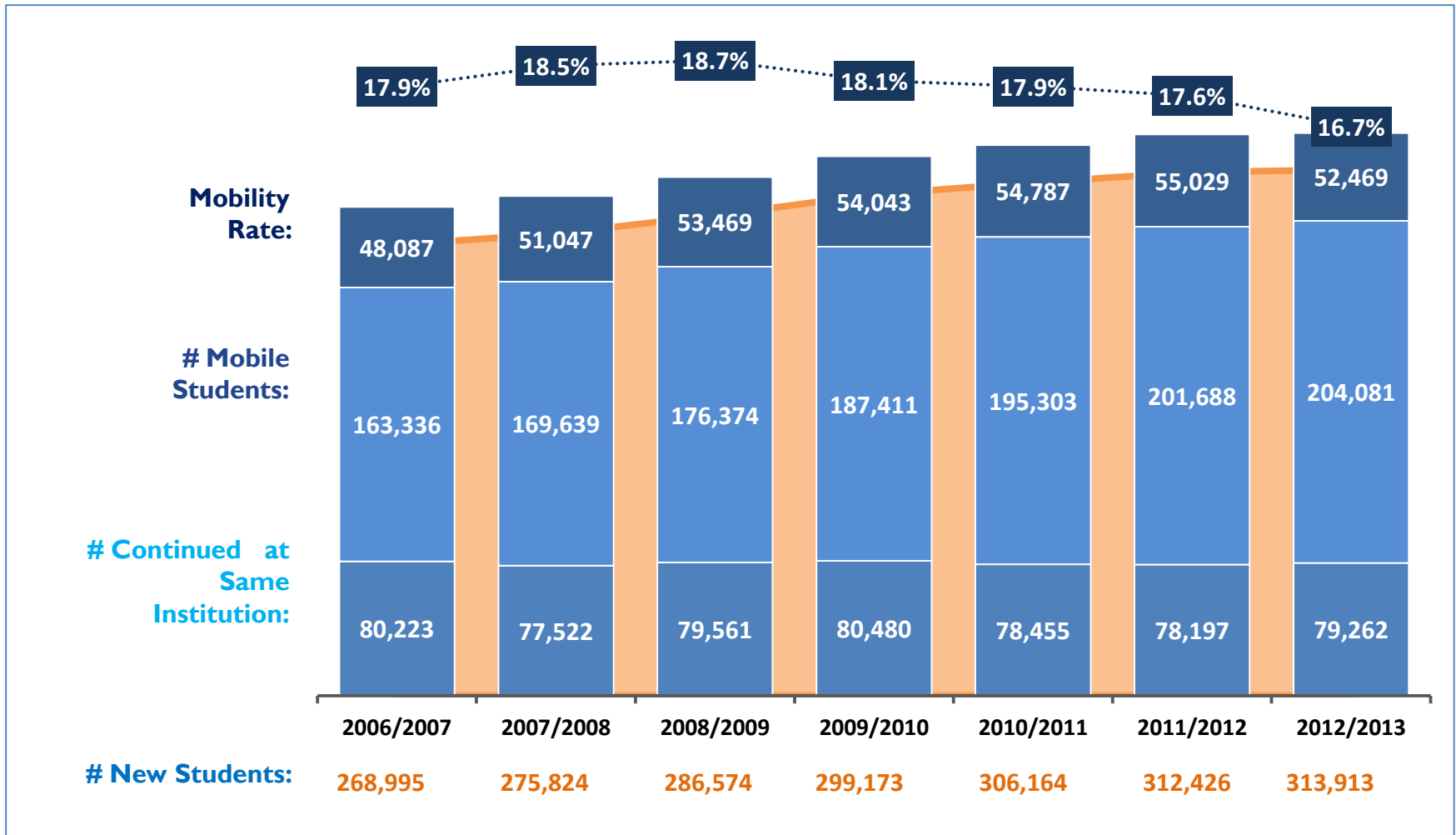
Student Mobility Data

- Provincial student mobility data tracks movement (registration) using PENs.
- Collaboration of Ministries of Advanced Education and Education, post-secondary institutions and BCCAT

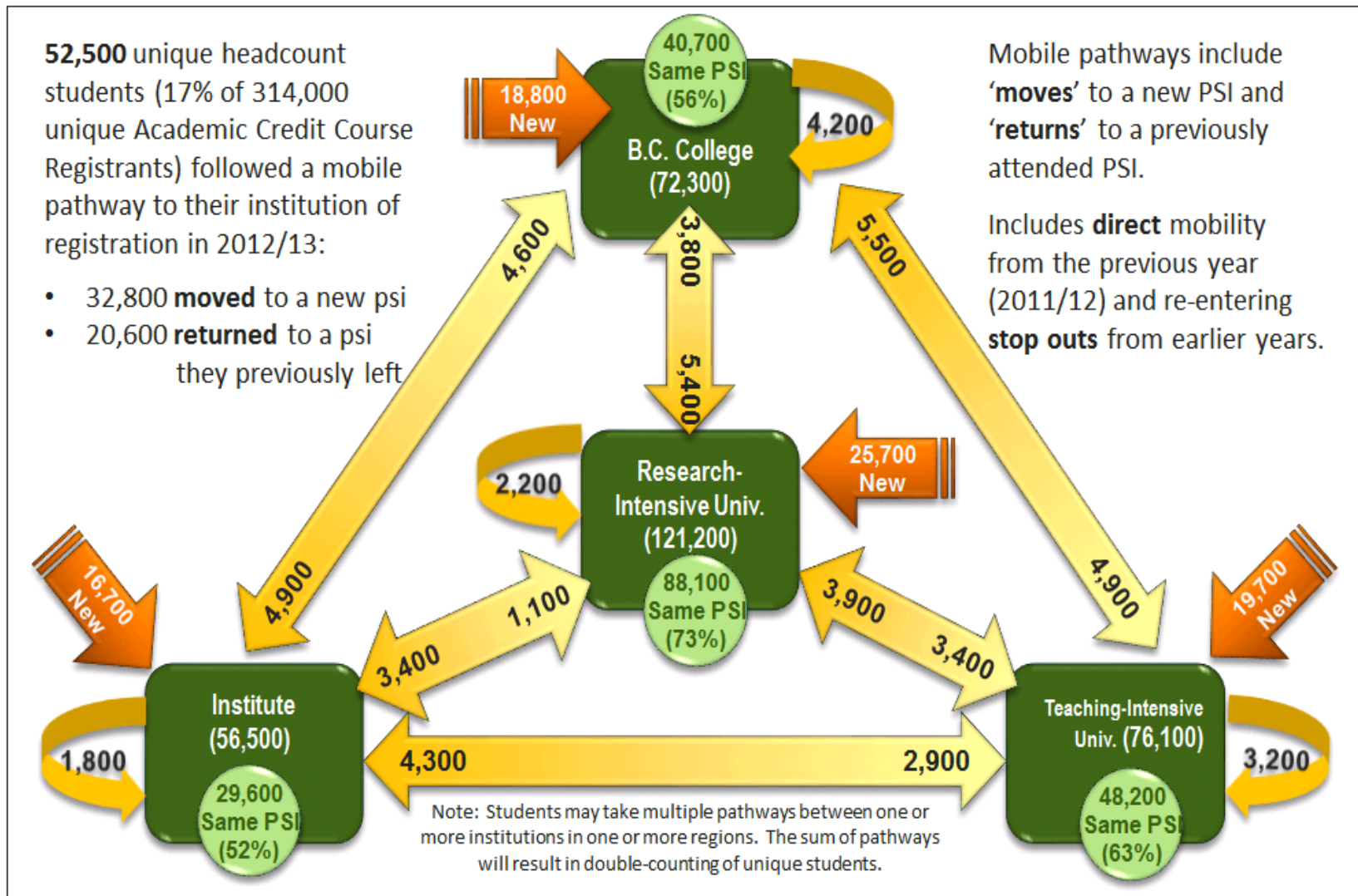


http://www.aved.gov.bc.ca/student_transitions/

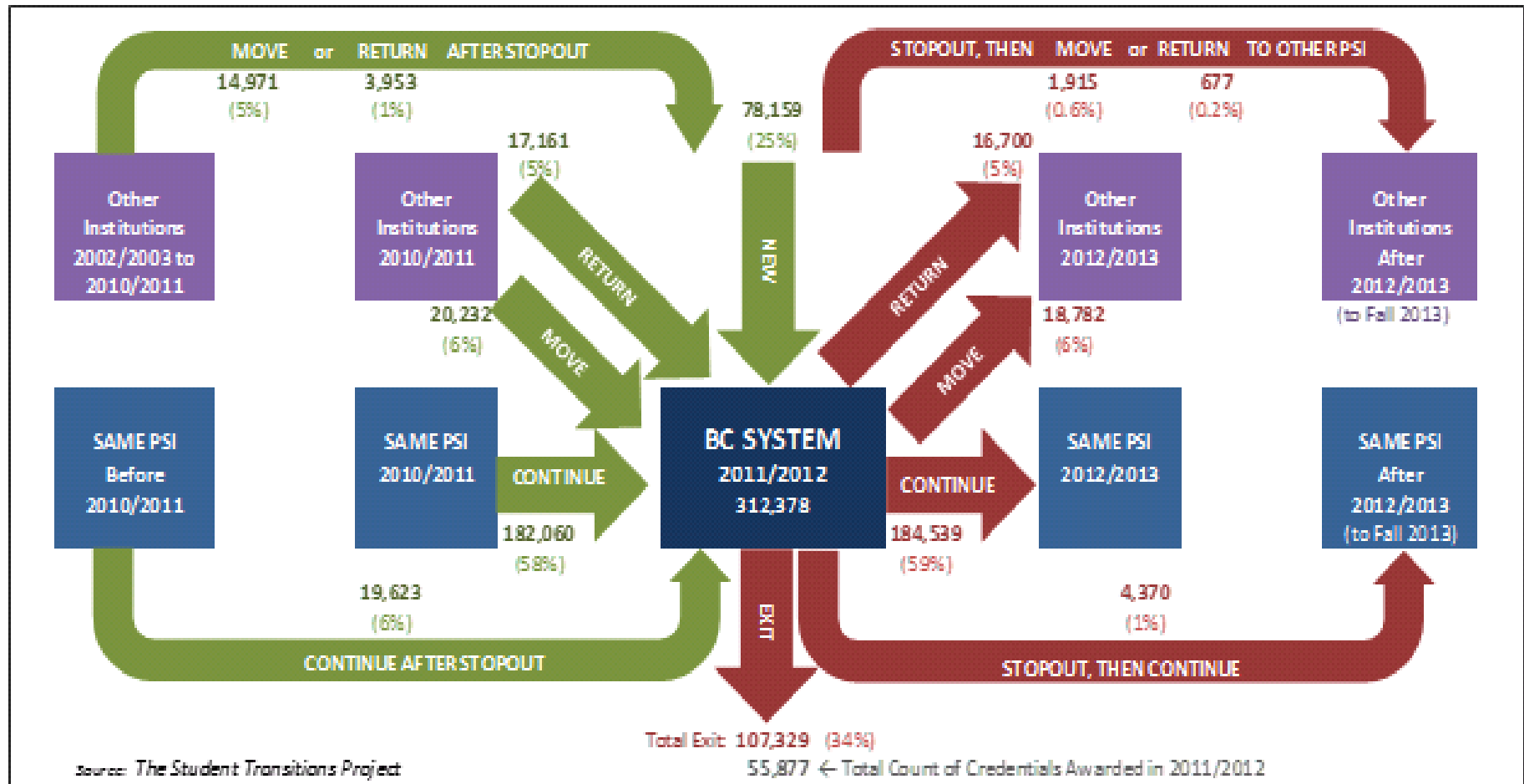
Student Mobility Highlights: Annual Mobility



Student Mobility Highlights: Sector Mobility



Student Mobility Highlights: Pathways



ACAT System Mobility Research

Mobility for Learners

System Level Student Mobility, Year By Year

Cohort Year	Full-time and part-time students in publicly funded institutions in Alberta	Students continuing in system	Students demonstrating system mobility continuing at a new institution
2004	238,000	135,500	18,000
2005	244,500	138,500	17,000
2006	251,000	141,000	17,500
2007	254,000	145,500	17,000
2008	260,000	149,500	17,500
2009	264,000	151,500	17,000
2010	266,000	154,500	17,000
2011	265,500	155,500	16,500
2012	269,500	156,500	16,000

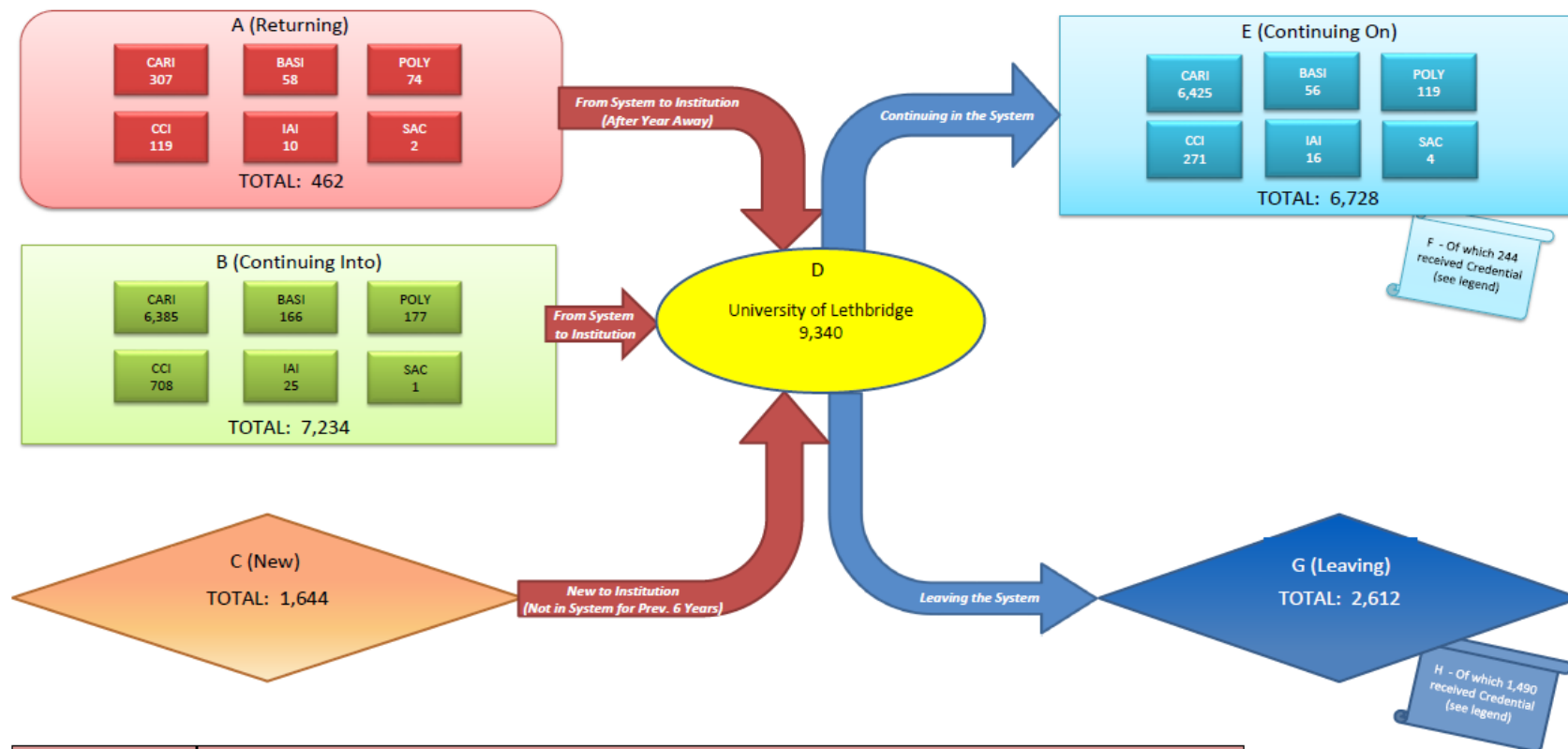
Note: Numbers reflect recently updated Alberta Student Number (ASN) information (e.g., account for deleted/retired ASNs) and have been rounded to the nearest half thousand).



Institution Student Enrolment Flow

This report provides the student enrolment data for public post-secondary institution(s) for a given academic year and student movement into, within and out of the institution(s).

University of Lethbridge 2011-2012



A (Returning)	Students that were not enrolled in 2010-11, but had an enrolment record at some point between 2005 - 2010
B (Continuing into)	Students that were enrolled in the system in 2010-11
C (New)	Students that had NO enrolment records in the previous 6 years (New to system)
D (Student Cohort)	Students enrolled full-time or part-time in the institution(s) in the cohort year (2011-2012)
E (Continuing On)	Students enrolled in an institution for the following year (2012-2013)
F	Students enrolled in an institution for the following year (2012-2013), and received a credential from University of Lethbridge in 2011-2012
G (Leaving)	Students NOT enrolled at an institution in the following year (2012-2013)
H	Students NOT enrolled in an institution for the following year (2012-2013), but received a credential from University of Lethbridge in 2011-2012

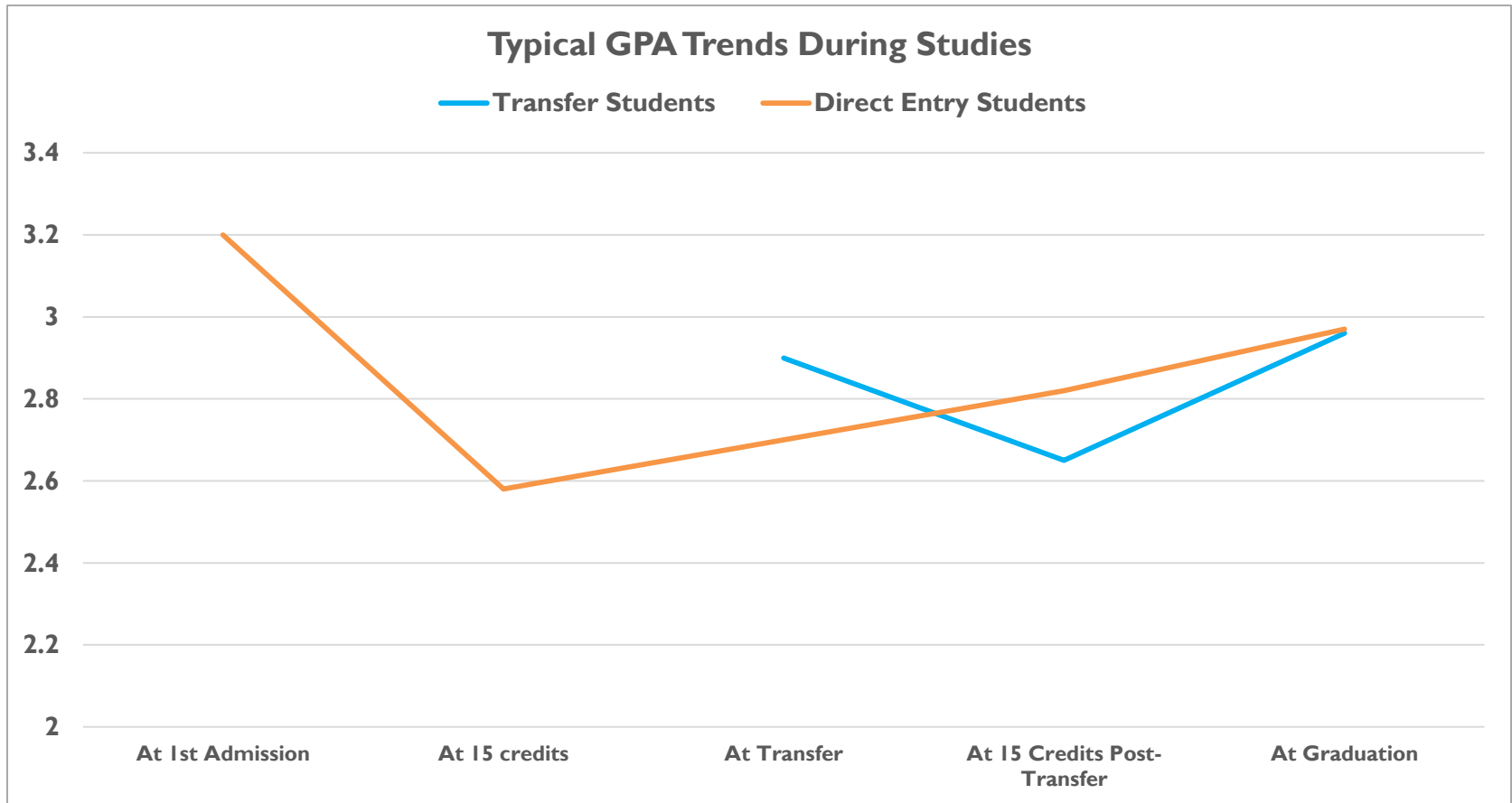
Notes:

- Values listed in the above diagram represent the number of Unique Students at the level you are looking at; therefore, adding up sector numbers in each category may lead to an inflated value.
- This report is sourced from LERS data, which contains enrolment data regarding all ministerially approved programs reported in LERS by publicly funded post-secondary institutions in Alberta's six sectors.
- Please refer to the "Student Enrolment Flow by Post-Secondary Institution" tab for the complete names of each sector (i.e., CARI, BASI, etc.) and for the enrolment of individual post-secondary institutions that make up each sector.
- For additional information about the diagram, please contact Eric Doheai at (780) 644-3185.

Updated August 2014

Transfer Student Performance (08/09 - 12/13)

- Approximately 5,000 transfer students/ year received by RUCBC Institutions. (STP reports about 55,000 mobile students annually.)



Course-Level Performance Data

➤ Useful for institutions who send students.

➤ Evidence of comparable performance

Region/ Institution	ANTH 100			BIOL 231			SPAN 201		
	# stdts	Adm GPA	Crse GPA	# stdts	Adm GPA	Crse GPA	# stdts	Adm GPA	Crse GPA
Northern BC/Yukon	3	X	X	4	X	X	4	X	X
College of New Caledonia	1	X	X	3	X	X			
Northern Lights College	1	X	X						
Northwest Community College				1	X	X	1	X	X
University of Northern British Columbia	1	X	X				2	X	X
Yukon College							1	X	X
Interior/Kootenays	121	73.93	74.18	134	76.09	72.56	83	75.44	75.75
College of the Rockies	7	75.67	80.29	6	78.30	80.00	1	X	X
Nicola Valley Institute of Technology									
Okanagan College	88	73.89	73.47	115	76.13	71.49	73	75.27	75.63
Selkirk College	10	72.72	74.70	6	74.67	86.83	3	X	X
Thompson Rivers University	16	74.14	75.06	7	74.83	71.57	6	74.95	73.83
Vancouver Island	20	70.73	73.75	11	71.86	77.82	6	69.44	73.67
Camosun College	5	70.56	81.00	3		X	1	X	X
North Island College	2	X	X						
Royal Roads University									
University of Victoria	9	68.46	71.89	4	X	X	4	X	X
Vancouver Island University	4	X	X	4	X	X	1	X	X
Lower Mainland	64	68.31	73.06	41	70.47	67.25	21	69.88	76.29
Public Lower Mainland	58	68.10	73.17	38	70.02	66.45	18	69.56	75.28

Region/ Institution	ANTH 100			BIOL 231			SPAN 201		
	# stdts	Adm GPA	Crse GPA	# stdts	Adm GPA	Crse GPA	# stdts	Adm GPA	Crse GPA
Transfer Students	208	71.82	73.73	190	74.58	71.63	114	73.96	75.87
Direct Entry students	1478	81.24	70.89	331	84.82	73.64	204	81.53	77.6

Source: BCCAT



Research Collaboration: A Few Benefits

- ▶ Similar tools like the OEN, ASN, and BC PEN have utility to inform institutions and systems
 - ▶ Credential completion
- ▶ Similar methodologies leverage expertise and comparability of information
 - ▶ Building off, adapting and enhancing the 30+ years of experience in BC
- ▶ Student Mobility Data and BCCAT transfer student surveys can guide institutional enrollment, program and persistence planning
 - ▶ How and why students move
- ▶ Student Mobility Data can guide pathway collaboration
 - ▶ Focusing program and institutional transfer efforts
- ▶ Student success research informs evidence-based decision making so students are treated fairly
 - ▶ Trust in quality assurance and standards alignment

Collaboration Opportunities Past and Present

- ▶ Understanding student mobility both intra- and inter-provincially, especially in border regions and along credential laddering pathways
- ▶ PCCAT Research
 - ▶ STUDENT MOBILITY IN CANADA ACROSS CANADIAN JURISDICTIONS 2007/08 TO 2009/10
 - ▶ ARUCC/PCCAT Transcript and Student Mobility Nomenclature Standards Guide
- ▶ ACAT-BCCAT Consultation and Collaborations
 - ▶ Dual Credit, Learning Outcomes, Articulation Committees
 - ▶ Cross Jurisdiction Mobility between “border” schools
- ▶ BC-Ontario Collaboration on Student Mobility Methodology and Data Definitions
- ▶ BC-Ontario Collaboration on Student Performance Methodologies and Analyses?
 - ▶ BCCAT Student Performance Profile Reports
 - ▶ Recent study on Brock University Transfer Students (Martinello and Stewart, “Transfers from College to One Ontario University: A Four-Year Outcome Study”)



ONCAT Annual Conference
April 21-22, 2015



Alberta – Interprovincial initiatives

- Reciprocal agreement with BC
- Institutional members of both CATS
- Articulation committees
- Joint research on dual credit
- WESTCAT – PCCAT





Alberta – Learner Pathways Modernization Initiative (LPMI)

Origins of Initiative – Alberta System Needs:

- Redevelopment the Alberta Transfer System and TransferAlberta.ca
- Goals:
 - remove barriers to student mobility
 - enable learner pathways (transfer, admissions, dual credit, PLAR, interprovincial mobility)
 - improve organizational processes, tools, and access to information to enable better administration of learner pathways
- Key Activities (Oct. 2014 to Date): [Transfer Alberta Mobile App](#), Transfer Alberta Search Tool Redevelopment, Business Assessment

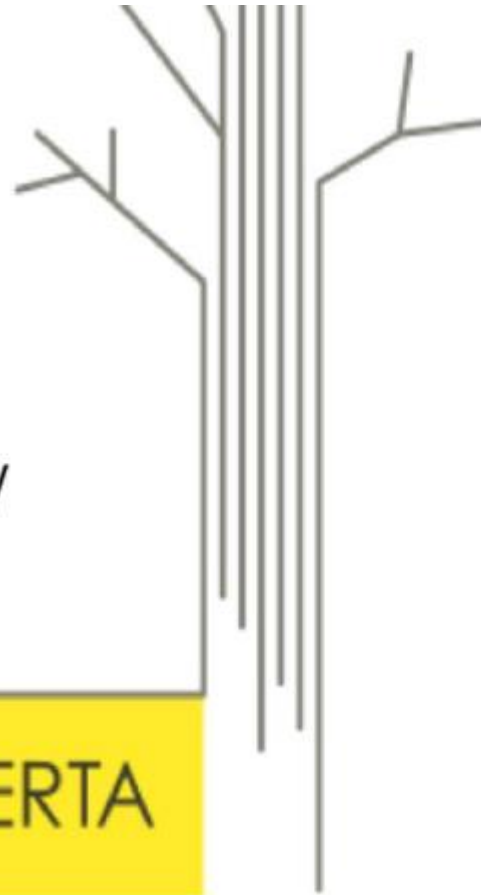


Mobile App

The Transfer Alberta App lists which courses and programs may transfer between Alberta post-secondary institutions.

The logo for the Transfer Alberta App, featuring the text "TRANSFER ALBERTA" in a bold, sans-serif font, centered within a bright yellow rectangular box.

TRANSFER ALBERTA



Mobile App

Check transferability of a:



Course(s)



Programs

TO



Start typing & select

Transferring to:



LPMI and Collaboration

Extensive Collaboration, Dialogue, and Data Gathering:

- Alberta Dialogue: Over 100 Alberta System Stakeholders and 3 other provinces/jurisdictions (BC, SK, MAN), including 8 focus groups and 10 meetings
- Canadian Dialogue: Western Canadian Consortium on Admissions and Transfer (WestCAT) provinces (Alberta, BC, SK, MAN) and ONCAT, including a two-day meeting
- Plans for Continued Dialogue: Completion of Alberta's Business Assessment Report and ACAT Project Plans (est. June 2015) and Next Steps with Stakeholders in 2015-16



Thank You and Contacts

Contacts:

- **ACAT Council:** Dr. Robin A. Fisher, ACAT Chair
(fishertrick@shaw.ca)
- **ACAT Secretariat:**
 - Ann Marie Lyseng, Senior Manager, Learner Pathways/ACAT Secretariat (annmarie.lyseng@gov.ab.ca)
 - Eric Dohei, ACAT Manager (eric.dohei@gov.ab.ca)



Future Collaboration - MOU

- ACAT, BCCAT, NBCAT and ONCAT announced and MOU to support future collaboration
 - Joint annual updates and communications
 - Referencing agreed upon pan-Canadian collaborations
 - Publication of articulation / transfer credit agreements
 - Research collaborations
 - Development of cross-jurisdictional data
 - Joint promotion of the other parties' conferences, events and professional development opportunities

Interprovincial Forum

- First step in a multi-stage process that will evolve based on the input of institutional participants.
- Two key goals to identify protocols/practices:
 - for more efficient and transparent transfer credit recognition processes and decisions between institutions across provincial jurisdictions.
 - to support the public availability of accurate institutional information on inter-provincial transfer credit.

Possible Topics

- Multi-jurisdiction Panel: Identifying Existing Credit Transfer Principles, Practices, and Problems in Canada
- Case Study Presentations: Inter and Intra-Provincial Dual Admission and Degree Program Pathways
- General Education Passports and Learning Outcomes Transfer Models: Applicability of U.S. Model in Canada?
- Working Groups: Identifying Priorities to Strengthen Inter and Intra-provincial Credit Transfer in Canada
- Presentation and Panel: Inter-institutional Sharing and Public Availability of Transfer Credit Recognition

Structure

- Monday, September 21, 2015
- Simon Fraser University—Harbour Centre Campus, Vancouver, BC
- Participants from Alberta, BC, Manitoba, New Brunswick, Ontario and Saskatchewan
- Mix between senior administration, faculty and non-academic staff with expertise in Credit Transfer



ONCAT

Ontario Council on Articulation and Transfer

180 Dundas Street West, Suite 1902
Toronto, Ontario M5G 1Z8
Tel: (416) 640-6951
Fax: (416) 640-6959
www.oncat.ca

ONCAT is funded by the Government of Ontario